

CARE AND MAINTENANCE

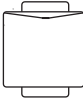


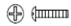


Unplug lamps before using any cleaning solutions. Dust shades with a feather duster or with an appropriate vacuum-brush attachment. Wipe with a soft, dry cloth and clean lamp bases with the methods appropriate to the material. Avoid the use of chemicals and household cleaners as they may damage the finish.

NOTICE & IMPORTANT SAFETY INSTRUCTIONS

- * Please make sure that you have all parts indicated before you begin assembly of this item
- * This item should be assembled on a soft surface to prevent scratching the finish during assembly
- * To reduce the risk of fire, electrical shock or injury to persons or property, please follow the guideline below for safe use and installation
- * The external flexible cable or cord of this luminaire cannot be replaced;
- If the cord is damaged, the luminaire shall be destroyed

**This portable lamp has a polarized plug (one blade is wider than the other) as a safety feature to reduce the risk of electric shock. This plug will fit in a polarized outlet only one way. If the plug does not fit fully in the outlet, reverse the plug, if it still does not fit, contact a qualified electrician. Never use with an extension cord unless the plug can be fully inserted. Do not attempt to defeat this safety feature.

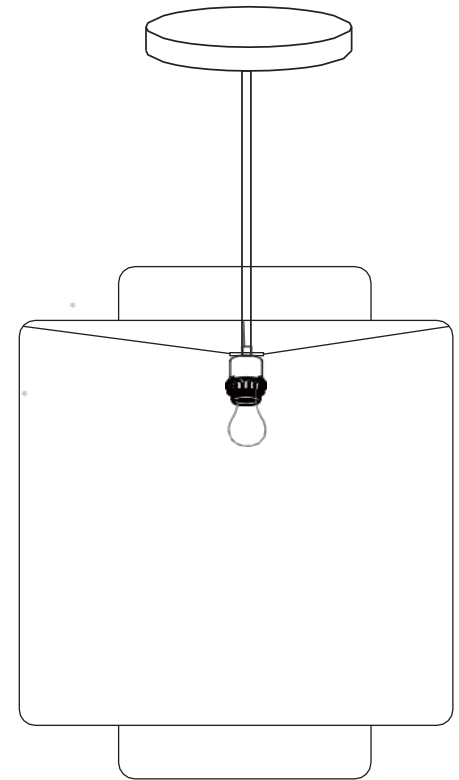
Part List and Hardware List

PIECE	DESCRIPTION	PICTURE	QUANTITY
A	Lamp base		1X
B	Lamp cord-set (Canopy)		1X
C	Lock nut		2X
D	Philip Screws		4X
E	Mounting plate		1X
F	A60 Led Bulb, 4W		1X



Model# PND9000A

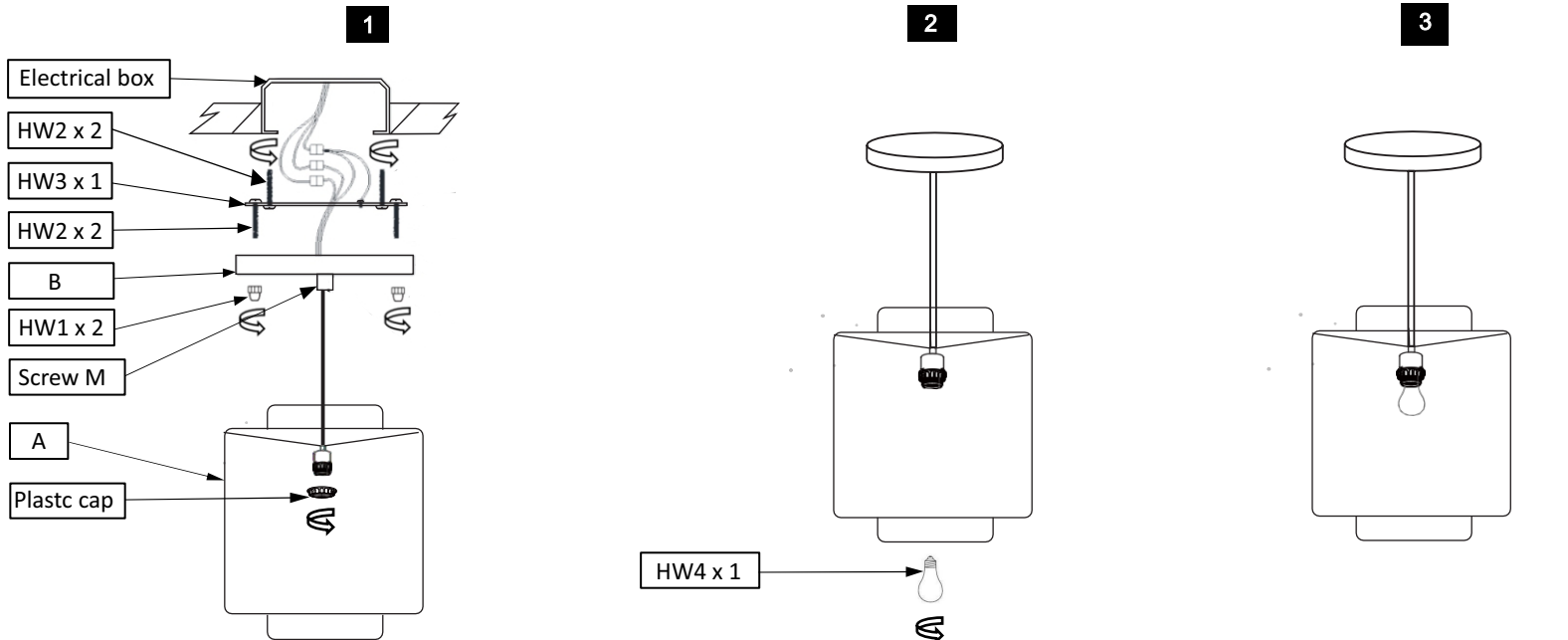
Product Dimensions: 20" X 20"D X 18"H



PREPARATION

Before beginning assembly of product, make sure all parts are present. Compare parts with package contents list and hardware contents list. If any part is missing or damaged, do not attempt to assemble the product.

Estimated Assembly Time: 6 minutes.



Step 1

- Thread the 2 screws (HW2) into the mounting plate (HW3).
- Attach the mounting plate (HW3) to an electrical box with screws (HW2).
- Connect the electrical box black wire to the black fixture wire and the electrical box white wire to the white fixture wire. Attach green/yellow grounding wire to the mounting strap and grounding screw.
- Align the holes in the canopy (B) with the 2 screws (HW2) on the mounting plate (HW3).
- Secure the canopy (B) to the mounting plate (HW3) with lock nut (HW1).
- Untie cord and gently lower lamp to final height and secure by screw M.
- Connect the Lamp shade (A) into lampholder on at center hole.
- Secure (A) to lampholder by plastic cap.

Step2

Insert the bulb (HW4) into the Lampholder.

Step3

Put the light on to check if everything is stable.

ENJOY YOUR LAMP