



SAFETY INFORMATION

- Assemble on a soft surface, such as carpeting, to avoid scratching the pole finish or tearing the umbrella fabric.
- Close the umbrella during windy condition. Do not leave the umbrella open in high winds.
- Use a heavy or weighted umbrella base to stabilize the umbrella.

CARE AND MAINTENANCE

Wash with mild soap and water, rinse with clean water and let air dry.
Always let the umbrella dry completely before storing.

PART LIST

Part#	Description	Picture	Qty
A	Umbrella		1
B	Lower Pole		1

OPERATION INSTRUCTION

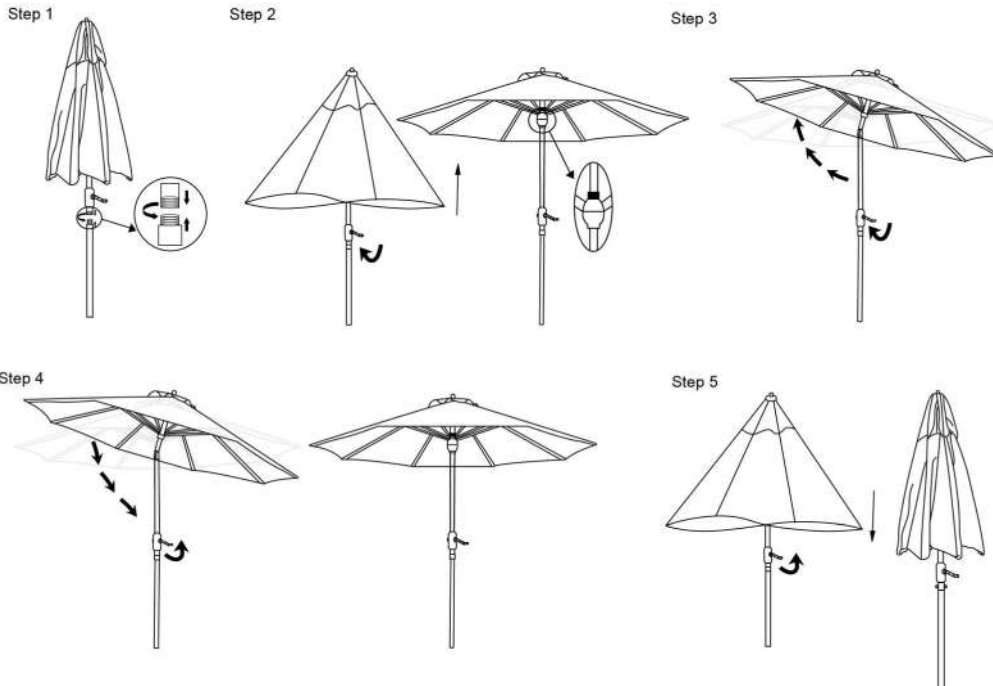
Step 1: Screw the top pole of the umbrella frame into the bottom pole to connect the two parts.

Step 2: Open umbrella by turning the crank to clockwise direction all the way up.

Step 3: Continue cranking in clockwise direction while umbrella tilts by itself.

Step 4: Crank counterclockwise to direct umbrella back to straight up position.

Step 5: Continue cranking in counterclockwise direction to close down the umbrella.



SAFAVIEH OUTDOOR

Model #PAT8100& PAT8101&PAT8103&PAT8104&PAT8106&
PAT8107&PAT8108&PAT8110&PAT8111

Product Dimension: 130" Dia.. x 105.51" H.

