

42x29.3cm



⚠ SAFETY INFORMATION

- Assemble on a soft surface, such as carpeting, to avoid scratching the pole finish or tearing the umbrella fabric.
- Close the umbrella during windy condition. Do not leave the umbrella open in high winds.
- Use a heavy or weighted umbrella base to stabilize the umbrella.

CARE AND MAINTENANCE

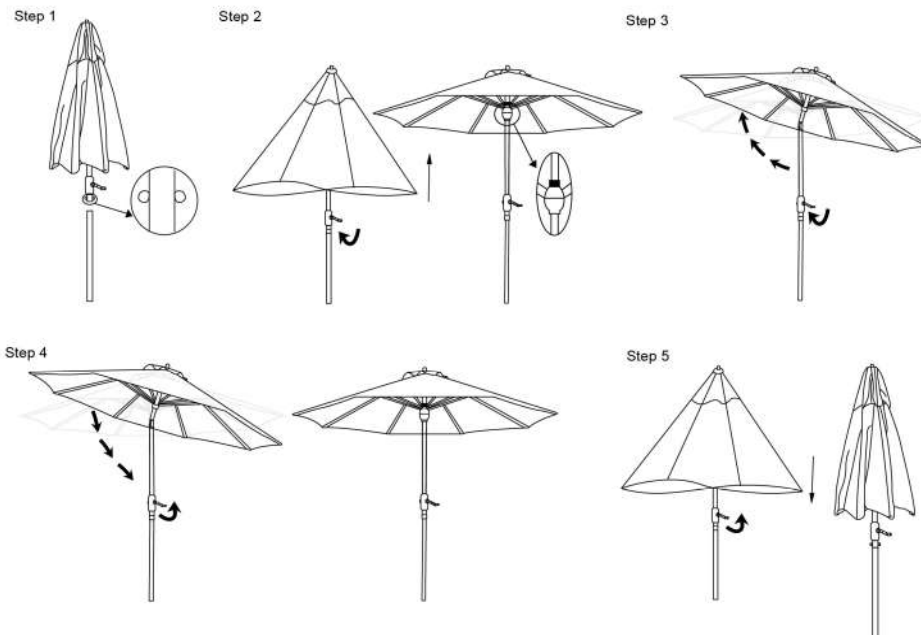
Wash with mild soap and water, rinse with clean water and let air dry. Always let the umbrella dry completely before storing.

PART LIST

Part#	Description	Picture	Qty
A	Umbrella		1
B	Lower Pole		1

OPERATION INSTRUCTION

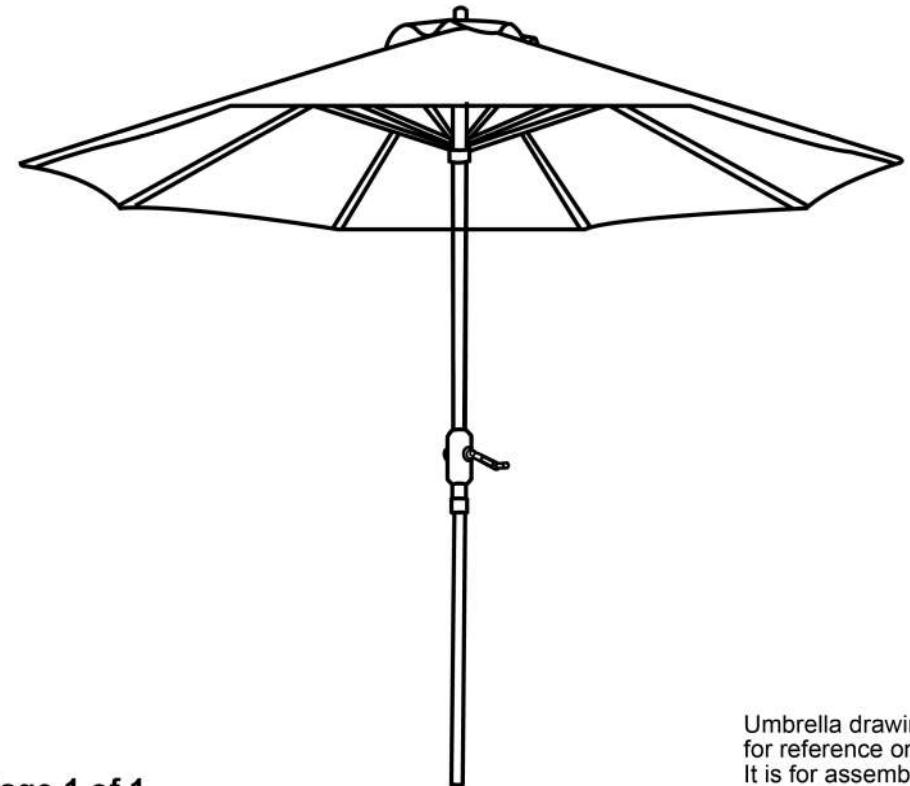
- Step 1: Connect umbrella with bottom pole by locking the metal pins.
Step 2: Open umbrella by turning the crank to clockwise direction all the way up.
Step 3: Continue cranking in clockwise direction while umbrella tilts by itself.
Step 4: Crank counterclockwise to direct umbrella back to straight up position.
Step 5: Continue cranking in counterclockwise direction to close down the umbrella.



 **SAFAVIEH**
O U T D O O R

Model #PAT8012

Product Dimension: 100.79" Dia. x 98.82" H.



Umbrella drawing
for reference only.
It is for assembly
instruction only