




CARE AND MAINTENANCE

Do not use acids or alkaline cleaning agents. Sharp objects will damage and scratch the surface. Wipe the surface with a soft, damp cloth

NOTICE

- * Please make sure that you have all parts indicated before you begin assembly of this item
- * This item should be assembled on a soft surface to prevent scratching the finish during assembly
- * This item may require periodic tightening

Part List and Hardware List

PIECE	DESCRIPTION	PICTURE	QUANTITY
A	PLATE		1x
B	MIDDLE BAR		1x
C	BASE		1x



Model#PAT5032

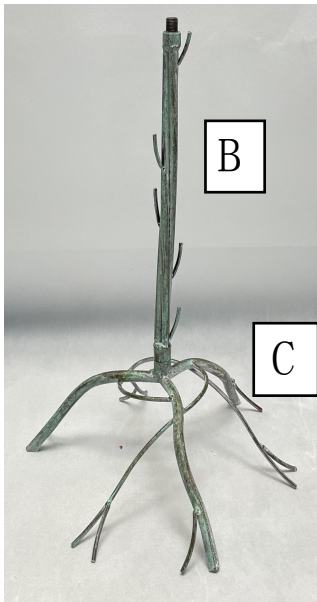
Product Dimensions:16.5"W x16.5" D x28" H



PREPARATION

Before beginning assembly of product, make sure all parts are present.
Compare parts with package contents list and hardware contents list.
If any part is missing or damaged, do not attempt to assemble the product.
Estimated Assembly Time: 10 minutes.
Tools Required for Assembly (included):N
Periodically check base and plate to make sure they are tight and secure.

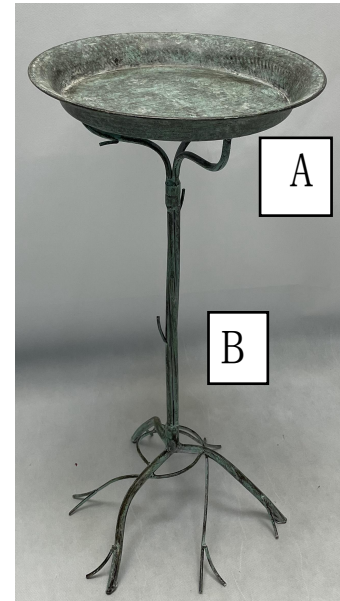
1



step1

Fix middle bar (B) to the base (C)

2



step2

Fix plate (A) to middle bar (B).