

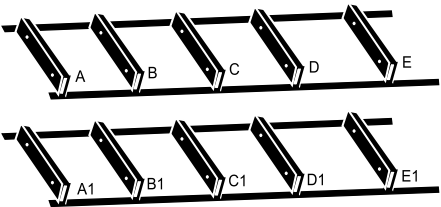
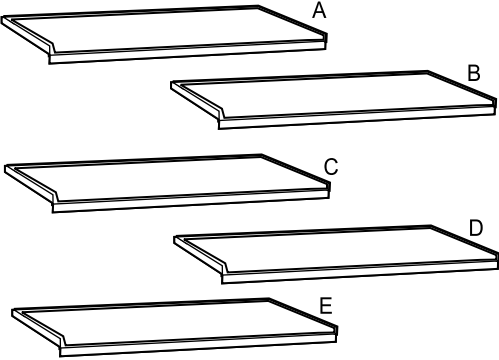
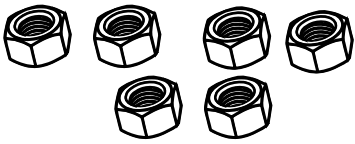
**CARE AND MAINTENANCE**

Do not use acids or alkaline cleaning agents. Sharp objects will damage and scratch the surface. Wipe the surface with a soft, damp cloth.

**NOTICE**

- \* This item should be assembled on a soft surface to prevent scratching the finish during assembly
- \* At least Three Persons are required to assemble the Product .
- \* Do not assemble the product with any kind of tool key, it will damage the finish. Product should be assembled by hands only.
- \* This item may require periodic tightening

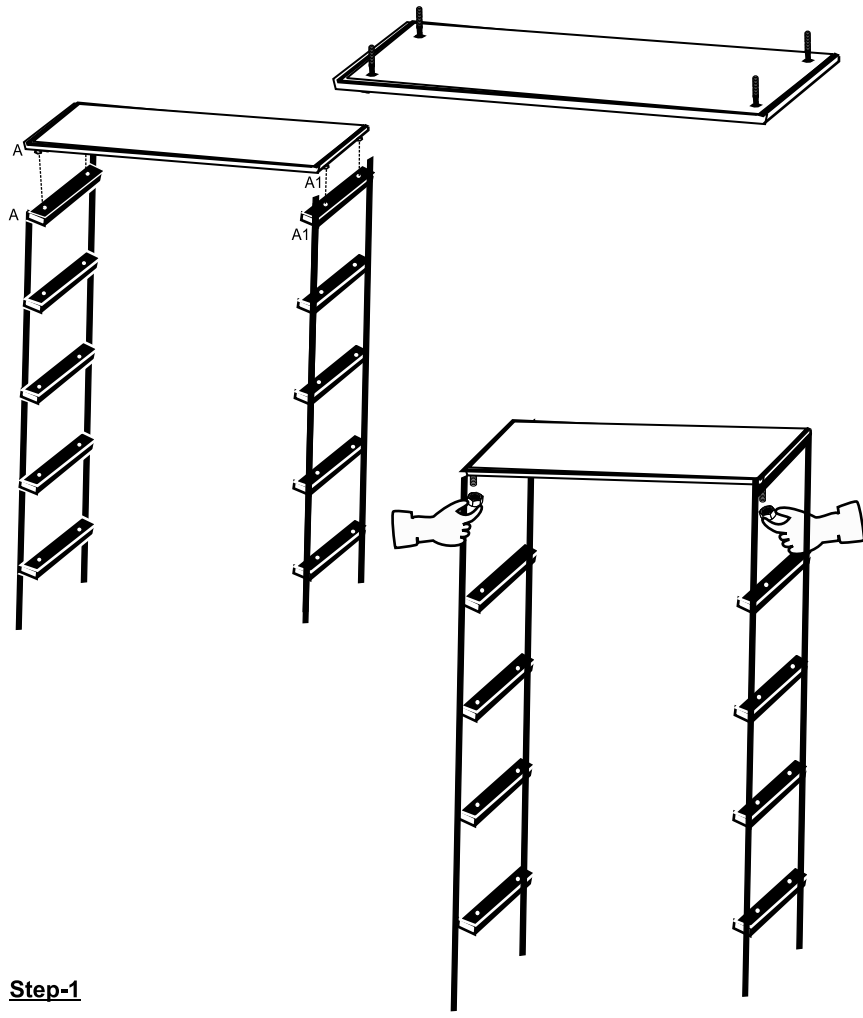
**Part List and Hardware List**

DESCRIPTION	PICTURE	QUANTITY
A	STANDS 	2X
B	PLATE 	5X
C	NUTS 	20X

**PREPARATION**

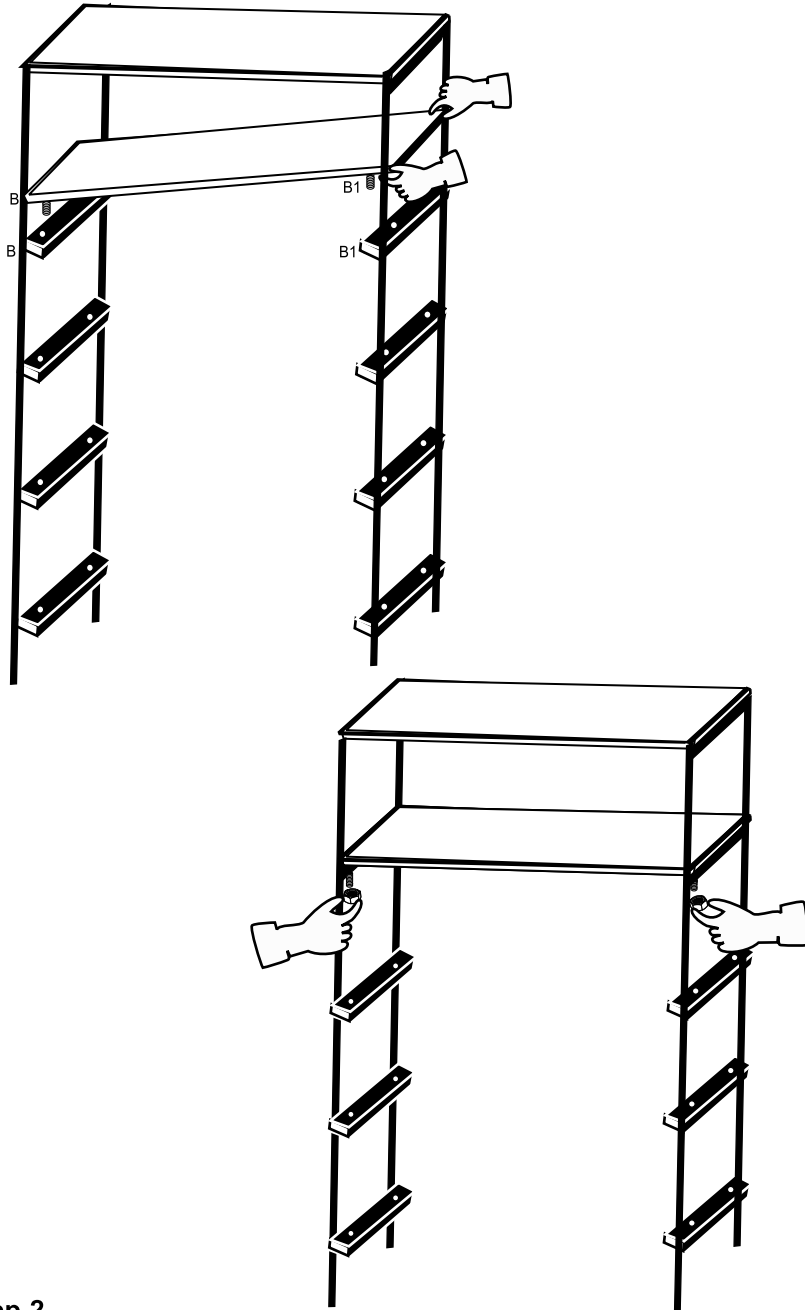
Before beginning assembly of product, make sure all parts are present. Compare parts with package contents list and hardware contents list. If any part is missing or damaged, do not attempt to assemble the product. Estimated Assembly Time: 15 minutes.

**1** NOTE : Please make sure to put mentioned Alphabet on plate & stand respectively.  
For eg : (A on A, A1 on A1, B on B, B1 on B1 & so on )



**Step-1**

2



Step-2

 **SAFAVIEH**  
FURNITURE

**MODEL # ETG3201B**

Product Dimensions : 28"x 10" x 52"

