

CARE AND MAINTENANCE

See care label





NOTICE

- * Please make sure that you have all parts indicated before you begin assembly of this item
- * This item should be assembled on a soft surface to prevent scratching the finish during assembly
- * This item may require periodic tightening

 **SAFAVIEH**
FURNITURE

THE DESIGN OF THE CHAIR IN THE DRAWINGS
MAY VARY FROM YOUR ACTUAL CHAIR, BUT
ASSEMBLY IS THE SAME ON ALL MODELS.

Part List and Hardware List

NO.	DESCRIPTION	PICTURE	QTY
1	Seat		1
2	Legs		1
H1	Butterfly Nut		4
H2	Ring		4



Weight Capacity : 275 lbs

WARNING : DO NOT STAND ON CHAIR

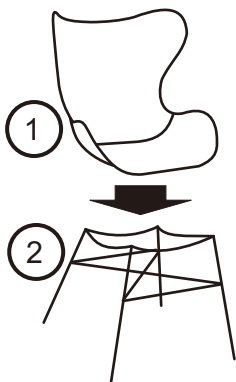
WARNING : DO NOT OVER TORQUE BOLTS/SCREWS



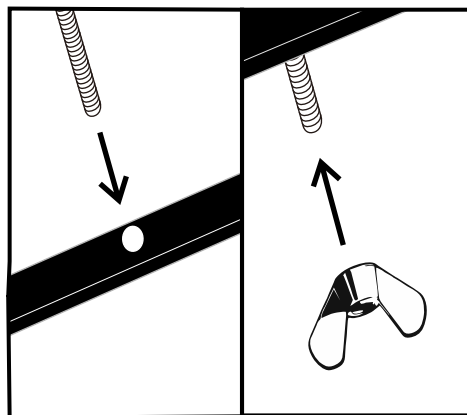
Hardware is located inside the box. You can find them placed near the sign 'HARDWARE INCLUDED'

PREPARATION

Before beginning assembly of product, make sure all parts are presents. Compare parts with package contents list and hardware contents list. If any part is missing or damaged, do not attempt to assemble the product.
Estimated Assembly Time : 5 minutes.
Tools Required for Assembly (Included): Allen Key



Step 1 : Put the seat on top of its base. Follow the arrow head and signs to place it correctly. Align its holes so bolts can be placed properly.



Step 2 : Insert bolts in each hole. Tighten them using allen key (provided). Do not over torque bolts.



Step 3 : Your chair is ready. Seat back and relax.

Hardware is located inside the box. You can find them placed near the sign 'HARDWARE INCLUDED'